

# TRENTON POTTERIES



Newsletter of the Potteries of Trenton

## *Rebekah at the Marriott:*

*Marriott Site Yellow Ware Waster Dump, Circa 1863-1868, Trenton, New Jersey  
Rebecca White and William B. Liebeknecht*

*Editor's Note: This is the second of a two-part article on a ceramic dump located in Trenton. Part 1 (Trenton Potteries, Vol. 3, Issue 1) discussed the wasters and identified the maker as Charles Coxon; Part 2 describes the different vessel types and decorations recovered from the dump.*

Archaeological monitoring by Hunter Research, Inc. in the summer of 2000 at the Marriott Hotel site in Trenton, New Jersey encountered a dump or deposit of yellow ware/Rockingham ware sherds and related kiln furniture. The deposit, observed in the side of a construction trench, was approximately 20 feet long and between 0.5 feet to 2.5 feet thick. It contained thousands of sherds from a variety of vessel forms but was dominated by shallow undecorated pie plates and nappies of various sizes.

After careful comparison and consultation with yellow ware and Trenton ceramic specialists Jay Lewis and the late David Goldberg, the authors concluded that the assemblage belongs to the Coxon Pottery c. 1863-1868, and that the vessels were designed by either Charles or his son John.

## *Vessels recovered from the waster dump:*

### Category 1: Food Related - Preparation

**Undecorated bowl/pan** with a slightly everted rim. Height 4.5 inches; rim diameter 12 inches; base diameter 7.5 inches.

**Batter bowl** with a pouring lip

**Rectangular bakers** with heights ranging from 1.5 - 2.5 inches but no complete dimensions available

**Rectangular baker** with a slightly everted rim, height 1.8 inches

**Large oval food molds:** one featuring a cherub in blackberries, another with large leaves and grapes in the center and an elaborate scroll motif along the upper sides

**Small oval corn food mold** with overlapping scales along the upper sides

**Turk's head molds** 10 1/2 inches in diameter

Various unidentified small and large mold fragments

**Bowls** in five nesting sizes with molded geometric border decorations in yellow ware:

<u>Height</u>	<u>Rim Diam.</u>	<u>Base Diam.</u>
3 in.	6.5 in.	2.5 in.
3.5 in.	7.5 in.	3.5 in.
4.5 in.	8.5 in.	4.5 in.
5 in.	10.5 in.	6 in.

*(Continued on page 2)*

### **Contents**

Rebecca at the Marriot: Marriot Site Yellow Ware Waster Dump  
*Rebecca White and William B. Liebeknecht*..... 1

Dish Discovery Day..... 4

Trenton Potteries Database Makes Official Debut  
*Patricia A. Madrigal*..... 5

*The Potteries of Trenton Society is a non-profit organization dedicated to the study and preservation of Trenton's ceramic past. Officers: President - Patricia Madrigal; Treasurer - Amy Earls; Secretary - Christy Morganstein. Board: Ellen Denker, Barbara Goldberg, Richard Hunter, William Liebeknecht, Molly Mertino, George Miller, Brenda Springsted. Newsletter Editor: Patricia Madrigal*

## Marriot Site Yellow Ware

(Continued from page 1)

5.5 in.      12 in.      7 in.

**Pie plates** in yellow ware and Rockingham:

<u>Height</u>	<u>Rim Diam.</u>	<u>Base Diam.</u>
1.3 in.	10 in.	8 in.
1.5 in.	10 in.	8 in.
1.5 in.	11 in.	9 in.
1.5 in.	11 in.	8 in.
1.5 in.	12 in.	9 in.

**Nappies** a nested set in yellow ware and Rockingham:

<u>Height</u>	<u>Rim Diam.</u>	<u>Base Diam.</u>
2.7 in.	11 in.	8 in.
3.0 in.	12 in.	8 in.
3.2 in.	12 in.	9.5 in.
3.5 in.	12 in.	10 in.
3.5 in.	12 in.	10.5 in.

**Wax sealer canning/preserve jar**, plain (outer rim diameter 4 ½ inches, inner rim diameter 2 ½ inches, base diameter is 4 ½ inches)

**Wax sealer canning/preserve jar** with thin vertical ribbing.

Category 2:  
Food Related - Serving

**Scalloped or vertical ribbed bowl** 6 inches in diameter

**Custard cups**

**Mugs/cups** (some with molded vertical ribs)

**Creamer** with a molded floral scene, 5 inches tall, unglazed

**Creamer** with a cavalier (Figure 1).

This vessel has two different cavalier figures on opposite sides: one with a dog, and the other next to vegetation.

**Paneled mugs**, two sizes with ear handles

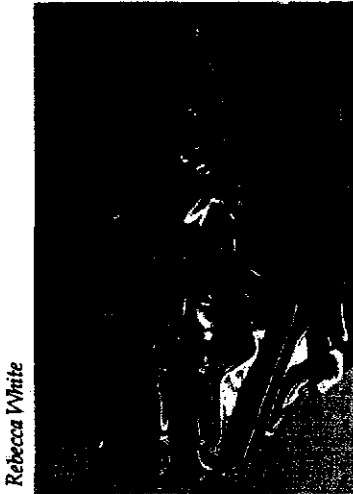
**Pitcher/jug** with leaves and branches, and possibly a branch handle

**Pitcher**, 10 inches tall with a hound handle. The body depicts two hunt scenes. One side shows a running stag over a rabbit chasing a game bird in opposite directions. The other side has a large hanging game bird over the same rabbit chasing game bird as shown on the opposite side. Both sides are framed by a simple arched border. The pouring lip is adorned by large eagle heads on both sides.

Sherds matching this pattern suggest that this pitcher also was made in a smaller size. The hound handles occur in two sizes, 1 inch wide by 6 inches long and 1 ¼ inches wide by 6 ½ inches long. The base is oval with the two sizes measuring 4 ½ by 4 ¼ inches and 5 ⅞ by 5 ⅞ inches. The base of a complete example in the larger size (in W. Liebeknecht's personal collection) is charred, suggesting it may have been used directly on a stove top to heat contents.

**Pitcher** with large cherub motif

**Tea pot** with two women having tea under a tree. The rim is 4 ½ inches in diameter with a lid ledge on the interior. A complete example is in the Jay Lewis collection.



Rebecca White

Figure 1: Molded cavalier figure from a Rockingham creamer.

(Continued on page 3)

## *Marriot Site Yellow Ware*

**Teapot** and lid with Rebekah at the Well motif, two sizes: 6  $\frac{3}{4}$  and 7  $\frac{7}{8}$  inches tall, excluding the lid. The spout has trailing bell flowers or daffodils. There are no grooves or pads on the base. Two lid sizes: 3 inches and 3  $\frac{1}{2}$  inches in diameter.

**Teapot** and lid with grape leaves on a paneled body and a branch handle. The lid has a 3  $\frac{1}{2}$ " inch outer diameter with a molded looping vine and grape leaves, the finial is missing. The branch handle divides at the base. A complete example is in the Jay Lewis collection.

**Possible coffee urn/storage crocks** (One with molded grape vines similar to a Bennett piece shown in Goldberg 1994, page 35)

**Toby** (small pitcher) (Figure 2). A man's head with a tri-cornered hat and paneled/petaled body with a base diameter of 2  $\frac{3}{4}$  inches. A complete example is in the Jay Lewis collection.

### Category 3: Bathroom/Waste Related

**Chamber pot** with matching lid, 10 inch exterior diameter, 6  $\frac{1}{2}$  inch interior diameter

**Spittoons/cuspidors** with molded shell-like object around the sides and plain or fluted funnel and a circular hole on the side for dumping the contents

**Spittoons/cuspidors** with molded wide vertical ribs and plain or fluted funnel and a circular hole on the side for dumping the contents

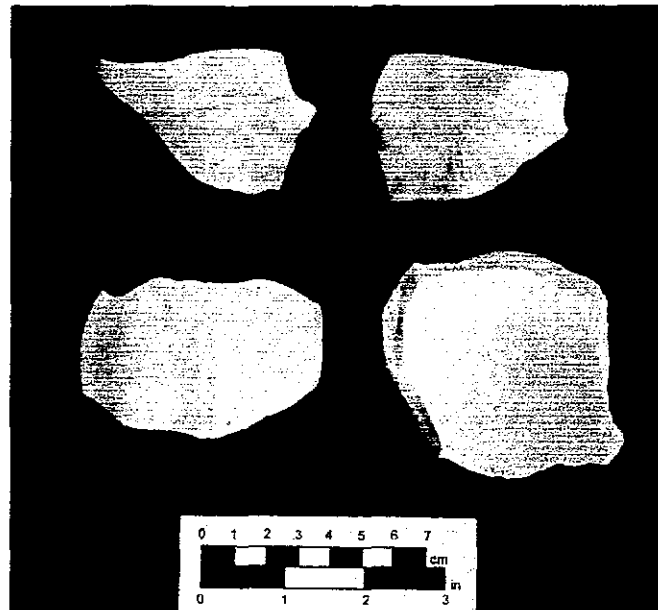


Figure 2. Fragments of a Toby pitcher.

**Spittoons/cuspidors** with molded thin vertical ribs and plain or fluted funnel and a circular hole on the side for dumping the contents

### **Oval shallow perforated soap dish**

**Recessed molded soap dish** with drainage perforations

### Category 4: Storage

**A domed lid** 5  $\frac{1}{2}$  inches in diameter, possibly for a small crock

**A flat disc-like lid** 4  $\frac{1}{4}$  inches in diameter

### **Small crocks**

### Category 5: Kiln furniture

(Continued on page 4)

## Marriot Site Yellow Ware

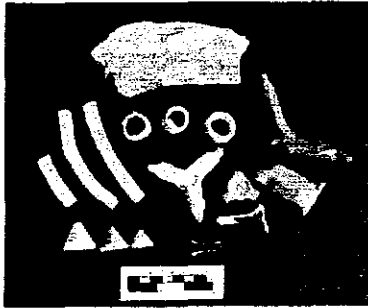


Figure 3: Examples of kiln furniture recovered from the waster dump.

(Continued from page 3)

*white-bodied triangular trivets (small)*

*white-bodied three legged trivets (small and medium sizes)*

*white-bodied three legged trivets with fluted legs*

*yellow ware three legged trivets (makeshift)*

*yellow ware test rings*

*pink earthenware pillows/wads*

*oval saggars*

*lumps of plaster, remnants of slip casting molds, now dissolved by ground and rain water.*

### Others

*Ball clay pipe stem and bowl marked "LONDON" "MASTE...R"*

*Ironstone/granite china bowl rim sherds with molded patterns*

*Ironstone/granite china food mold (overlapping leaves)*

### References

Goldberg, David

1994 "Charles Coxon: Nineteenth Century Potter, Modeler, Designer and Manufacturer." *American Ceramic Circle*, Vol. IX.

## POTS Holds Second Dish Discovery Day

The Potteries of Trenton Society held its second Dish Discovery Day on May 5 at the Trenton City Museum at Ellarslie.

Members and non-members brought their mystery ceramics in hopes of learning something about their pieces. Among the ceramics that were brought in for identification were pieces made by Lenox, Willets, Trenton Potteries Company, Stangl and Fulper. There were even some mystery pieces so mysterious that the panel was stumped.

Ceramic identifications were provided by Bert and Ellen Denker, Jay and Emma Lewis, Arthur Goldberg and William Liebeknecht. Members of the audience expressed interest in every piece brought in, and there were



*Ironstone candle holder brought to Dish Discovery Day by one of our members.*

some lively and informative discussions between the audience and the ceramic specialists.

POTS would like to thank everyone who came to this event. We are hoping to generate enough interest in Dish Discovery Day to make in an annual event.

## *Trenton Potteries Database Makes Official Debut*

*Patricia A. Madrigal*

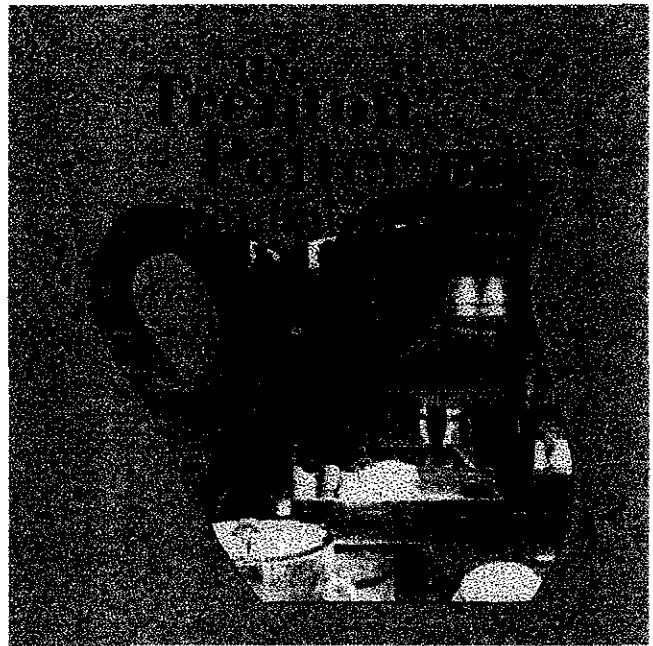
**H**unter Research, Inc., a cultural resources consulting firm based in Trenton, New Jersey, unveiled the Trenton Potteries Database at two workshops in May. The workshops were sponsored by the New Jersey Department of Transportation and the New Jersey Historic Preservation Office and were part of Preservation Week festivities.

Hunter Research staff members (and current POTS board members) Richard Hunter, William Liebeknecht and Patricia Madrigal led the workshops. Mr. Hunter began with an overview of the database project and a short history of Trenton's ceramic industry. Ms. Madrigal then demonstrated the database, showing the information it contains, the format in which it is presented, and the ways it can be searched. Mr. Liebeknecht concluded with a show-and-tell of Trenton ceramics, drawing particular attention to the yellow wares produced by Jonathan Coxon and the hotel wares produced by the Lamberton China and Scammel China companies.

The Trenton Potteries Database was created as part of the cultural resources mitigation plan for the New York Avenue/U.S. Route 1 exit ramp, which was constructed on the site of the Enterprise Pottery, the first pottery in the United States built solely for the

manufacture of sanitary ware (sinks, toilets, bathtubs, etc.). The database contains information on the industrial potteries operating in Trenton between 1850 and 1940. Each entry has information on the potteries' location, owners, products, and years in operation. Where available, historic maps, advertisements, makers' marks, photographs and engravings have been scanned into the database. All in all, the database has 100 distinct pottery manufacturing locations in Trenton, representing nearly 200 companies that produced everything from doorknobs to toilets, china to electrical porcelain.

The next database workshop is planned for the Council for Northeastern Historical Archaeology (CNEHA) conference at the Wyndam Hotel in Wilmington, Delaware on October 18, 2002.



Phone: 609-695-0122  
Fax: 609-695-0147  
Email: madrigal@buntenresearch.com

120 W. State Street  
Trenton, NJ 08608

Potteries of Trenton Society

## *POTS Membership*

Membership in the Potteries of Trenton Society is open to all interested in Trenton's pottery industry and the ceramic products manufactured here. We welcome pottery workers, historians, archaeologists and collectors. Your contribution is used to support newsletter, lecture, meeting, and conference costs.

Annual Memberships:

\_\_\_\_\_ Regular (\$20) \_\_\_\_\_ Couples (\$25) \_\_\_\_\_ Students (\$15, with ID) \_\_\_\_\_ Seniors (\$15)

Name: \_\_\_\_\_

Address: \_\_\_\_\_

City \_\_\_\_\_ State \_\_\_\_\_ Zip \_\_\_\_\_

email \_\_\_\_\_

Please make your check payable to the Potteries of Trenton Society and mail to:

Potteries of Trenton Society  
Amy Earls, Treasurer  
P.O. Box 121  
Florence, NJ 08518